

# CASULA AGED CARE

18 RANDWICK CLOSE, CASULA, NSW 2758

## ARCHITECTURAL DRAWINGS - DEVELOPMENT APPLICATION

### DRAWING SCHEDULE

|        |  |
|--------|--|
| DA-000 | COVER SHEET  |
| DA-010 | SITE ANALYSIS - LOCAL CONTEXT                                |
| DA-011 | SITE ANALYSIS - SITE CONTEXT                                 |
| DA-030 | SITE PLAN  |
| DA-109 | FLOOR PLAN - BASEMENT 1                                      |
| DA-110 | FLOOR PLAN - GROUND FLOOR                                    |
| DA-111 | FLOOR PLAN - LEVEL 1   |
| DA-112 | FLOOR PLAN - LEVEL 2   |
| DA-113 | FLOOR PLAN - LEVEL 3   |
| DA-114 | FLOOR PLAN - LEVEL 4   |
| DA-115 | FLOOR PLAN - LEVEL 5   |
| DA-116 | FLOOR PLAN - ROOF PLAN                                       |
| DA-200 | STREET ELEVATION   |
| DA-201 | ELEVATIONS - BLOCK A - 01                                    |
| DA-202 | ELEVATIONS - BLOCK A - 02                                    |
| DA-203 | ELEVATIONS - BLOCK B - 01                                    |
| DA-204 | ELEVATIONS - BLOCK B - 02                                    |
| DA-205 | ELEVATIONS - BLOCK C   |
| DA-300 | SITE SECTIONS - 01   |
| DA-301 | SITE SECTIONS - 02   |
| DA-302 | SITE SECTIONS - 03   |
| DA-400 | PERSPECTIVE - VIEW OF KURRAJONG ROAD ENTRY                   |
| DA-401 | PERSPECTIVE - VIEW OF COMMUNAL COURTYARD                     |
| DA-402 | PERSPECTIVE - AERIAL VIEW                                    |
| DA-403 | PERSPECTIVE - VIEW OF COMMUNAL COURTYARD - ALTERNATIVE ANGLE |
| DA-600 | GFA AREA PLANS / DEEP SOIL CALCULATIONS                      |
| DA-601 | GFA AREA PLANS / DEEP SOIL CALCULATIONS                      |
| DA-602 | GFA AREA PLANS / DEEP SOIL CALCULATIONS                      |
| DA-700 | SOLAR & CROSS VENTILATION DIAGRAMS                           |
| DA-701 | SOLAR DIAGRAMS (3 HRS)                                       |
| DA-750 | ADG COMPLIANCE / YIELD / PARKING CALCULATIONS                |
| DA-800 | SHADOW DIAGRAMS 21 JUNE 9AM - 3PM                            |
| DA-801 | SHADOW DIAGRAMS (RANDWICK CLOSE) 21 JUNE 9AM - 3PM           |
| DA-850 | DIRECT SUN ANALYSIS DIAGRAMS 21 JUN 9AM-12PM                 |
| DA-851 | DIRECT SUN ANALYSIS DIAGRAMS 21 JUN 1PM-3PM                  |
| DA-852 | HEIGHT PLANE STUDY   |

### ABBREVIATIONS

|       |                                |
|-------|--------------------------------|
| A/L   | AIRLOCK                        |
| ADG   | APARTMENT DESIGN GUIDE         |
| BAL   | BALCONY                        |
| BOL   | BOLLARD                        |
| CH ST | CHEMICAL STORE                 |
| CIRC  | CIRCULATION                    |
| CON   | CONSULTANT ROOM                |
| EQ ST | EQUIPMENT STORE                |
| FS    | FIRE STAIR                     |
| FSR   | FLOOR SPACE RATIO              |
| GFA   | GROSS FLOOR AREA               |
| GR    | GARBAGE ROOM                   |
| ILU   | INDEPENDANT LIVING UNIT        |
| OFF   | OFFICE                         |
| RACF  | RESIDENTIAL AGED CARE FACILITY |
| RL    | RELATIVE LEVEL                 |
| ST    | STORE                          |
| TER   | TERRACE                        |

CONCEPTS AND INFORMATION CONTAINED IN THIS DRAWING ARE COPYRIGHT AND MAY NOT BE REPRODUCED IN WHOLE OR PART OR BY ANY MEDIA, WITHOUT THE WRITTEN PERMISSION OF JACKSON TEECE. DO NOT SCALE THIS DRAWING. USE FIGURED DIMENSIONS ONLY. VERIFY ALL PROJECT DIMENSIONS BEFORE COMMENCING ON-SITE WORK OR OFF-SITE FABRICATION. NOTIFY JACKSON TEECE OF ANY DISCREPANCIES AND SEEK INSTRUCTIONS.

### AMENDMENTS

| ISSUE | DESCRIPTION                 | APPROVED | DATE     |
|-------|-----------------------------|----------|----------|
| A     | FOR DEVELOPMENT APPLICATION | RP       | 15/11/19 |
| B     | FOR DEVELOPMENT APPLICATION | RP       | 07/01/21 |



PERSPECTIVE VIEW FROM KURRAJONG ROAD



LOCATION PLAN

THIS DRAWING ISSUE HAS BEEN REVIEWED FOR

### DEVELOPMENT APPLICATION

APPROVED BY: GA CHECKED BY: RP

CLIENT SUMMIT CARE



DRAWING COVER SHEET

SHEET CREATED 12/11/15 SCALE @ A1 As indicated DRAWN JC

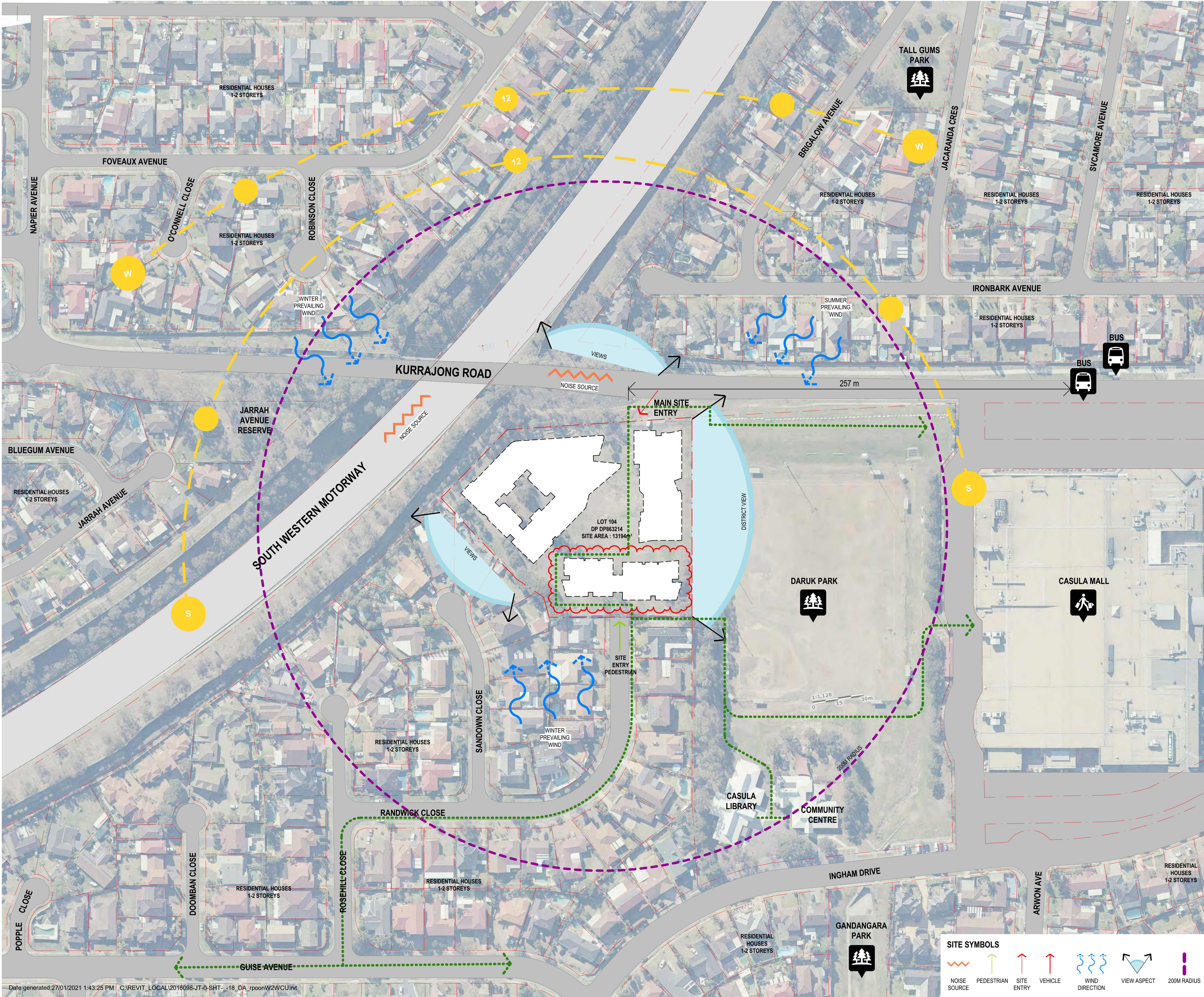
PROJECT No. 2016098 A DISCP. DA-000 ISSUE B

PROJECT CASULA AGED CARE

Lot 1, Pier 8-9, 23 Hickson Road  
Walsh Bay New South Wales 2000 Australia  
T 61 2 9290 2722 F 61 2 9290 1150  
E sydney@jacksonteece.com  
Jackson Teece Chesterman Willis Pty Ltd  
Trading as Jackson Teece  
ABN 15 683 837 290  
Nominated Architects: Damian Barker (8192), John Gow (6790), Daniel Hudson (8315)

JACKSON TEECE





CONCEPTS AND INFORMATION CONTAINED IN THIS DRAWING ARE COPYRIGHT AND MAY NOT BE REPRODUCED IN WHOLE OR PART OR BY ANY MEDIA, WITHOUT THE WRITTEN PERMISSION OF JACKSON TEECE. DO NOT SCALE THIS DRAWING. USE FIGURED DIMENSIONS ONLY. VERIFY ALL PROJECT DIMENSIONS BEFORE COMMENCING ON-SITE WORK OR OFF-SITE FABRICATION. NOTIFY JACKSON TEECE OF ANY DISCREPANCIES AND SEEK INSTRUCTIONS.

| AMENDMENTS |                             |          |          |
|------------|-----------------------------|----------|----------|
| ISSUE      | DESCRIPTION                 | APPROVED | DATE     |
| A          | FOR DEVELOPMENT APPLICATION | RP       | 15/11/19 |
| B          | FOR DEVELOPMENT APPLICATION | RP       | 07/01/21 |

THIS DRAWING ISSUE HAS BEEN REVIEWED FOR  
**DEVELOPMENT APPLICATION**

APPROVED BY: GA  
CLIENT: SUMMIT CARE

CHECKED BY: RP

SUMMITCARE

DRAWING: SITE ANALYSIS - LOCAL CONTEXT

SHEET CREATED: 06/02/16  
SCALE @ A1: As indicated  
DRAWN: JC

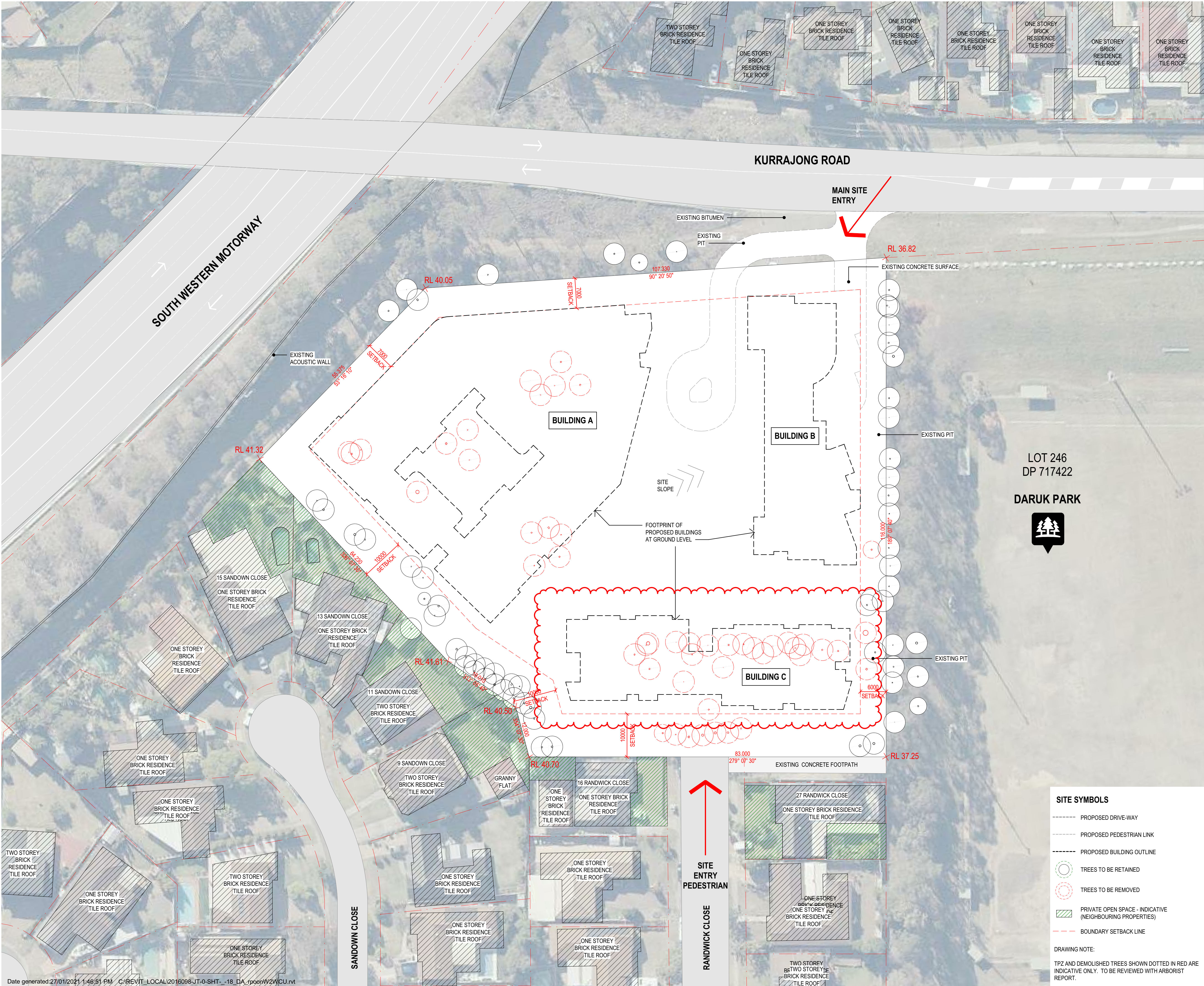
PROJECT No.: 2016098 A  
DISCP.: DA-010  
ISSUE: B

PROJECT: CASULA AGED CARE

Lot 1, Pier 8-9, 23 Hickson Road  
Walsh Bay New South Wales 2000 Australia  
T 61 2 9290 2722 F 61 2 9290 1150  
E sydney@jacksonteece.com  
Jackson Teece Chesterman Willis Pty Ltd  
Trading as Jackson Teece  
ABN 15 083 837 590  
Nominated Architects: Damian Barker (8192), John Gow (6790), Daniel Hudson (8315)

**JACKSON TEECE**





CONCEPTS AND INFORMATION CONTAINED IN THIS DRAWING ARE COPYRIGHT AND MAY NOT BE REPRODUCED IN WHOLE OR PART OR BY ANY MEDIA, WITHOUT THE WRITTEN PERMISSION OF JACKSON TEECE. DO NOT SCALE THIS DRAWING. USE FIGURED DIMENSIONS ONLY. VERIFY ALL PROJECT DIMENSIONS BEFORE COMMENCING ON-SITE WORK OR OFF-SITE FABRICATION. NOTIFY JACKSON TEECE OF ANY DISCREPANCIES AND SEEK INSTRUCTIONS.

| AMENDMENTS |                             |          |          |
|------------|-----------------------------|----------|----------|
| ISSUE      | DESCRIPTION                 | APPROVED | DATE     |
| A          | FOR DEVELOPMENT APPLICATION | RP       | 15/11/19 |
| B          | FOR DEVELOPMENT APPLICATION | RP       | 07/01/21 |

THIS DRAWING ISSUE HAS BEEN REVIEWED FOR

## DEVELOPMENT APPLICATION

APPROVED BY: GA  
CLIENT: SUMMIT CARE

CHECKED BY: RP

DRAWING: SITE ANALYSIS - SITE CONTEXT

SHEET CREATED: 04/09/19  
SCALE @ A1: 1 : 400  
DRAWN: JC



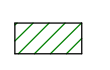
PROJECT No.: 2016098 A  
DISCP.: DA-011  
ISSUE: B

PROJECT: CASULA AGED CARE

Lot 1, Pier 8-9, 23 Hickson Road  
Walsh Bay New South Wales 2000 Australia  
T 61 2 9290 2722 F 61 2 9290 1150  
E sydney@jacksonteece.com  
Jackson Teece Chesterman Willis Pty Ltd  
Trading as Jackson Teece  
ABN 15 083 807 290  
Nominated Architects: Damian Barker (8192), John Gow (6790), Daniel Hudson (8315)

**JACKSON TEECE**

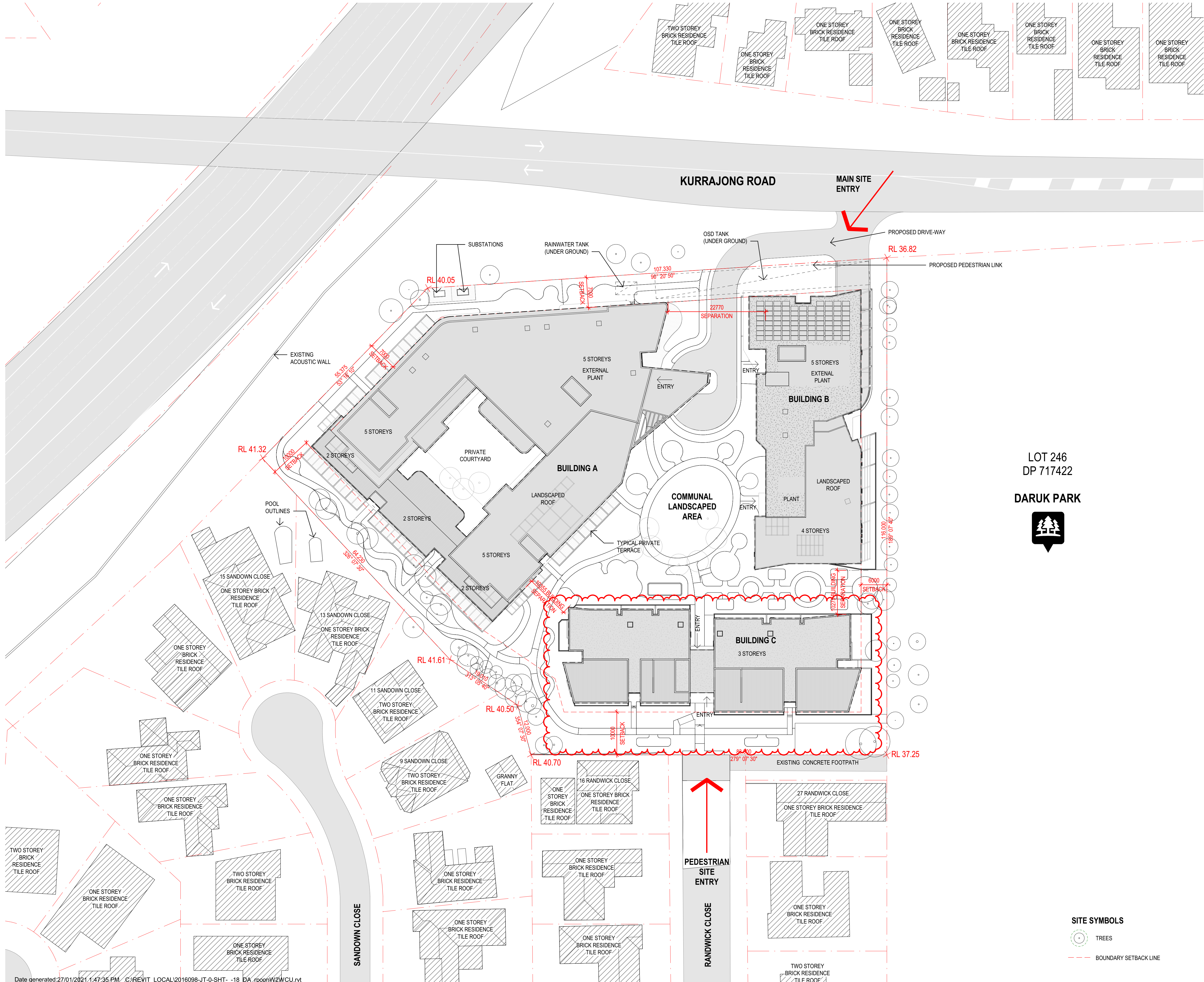
### SITE SYMBOLS

- PROPOSED DRIVE-WAY
- PROPOSED PEDESTRIAN LINK
- PROPOSED BUILDING OUTLINE
-  TREES TO BE RETAINED
-  TREES TO BE REMOVED
-  PRIVATE OPEN SPACE - INDICATIVE (NEIGHBOURING PROPERTIES)
- - - - - BOUNDARY SETBACK LINE

### DRAWING NOTE:

TPZ AND DEMOLISHED TREES SHOWN DOTTED IN RED ARE INDICATIVE ONLY. TO BE REVIEWED WITH ARBORIST REPORT.





CONCEPTS AND INFORMATION CONTAINED IN THIS DRAWING ARE COPYRIGHT AND MAY NOT BE REPRODUCED IN WHOLE OR PART OR BY ANY MEDIA, WITHOUT THE WRITTEN PERMISSION OF JACKSON TEECE. DO NOT SCALE THIS DRAWING. USE FIGURED DIMENSIONS ONLY. VERIFY ALL PROJECT DIMENSIONS BEFORE COMMENCING ON-SITE WORK OR OFF-SITE FABRICATION. NOTIFY JACKSON TEECE OF ANY DISCREPANCIES AND SEEK INSTRUCTIONS.

| AMENDMENTS |                             |          |          |
|------------|-----------------------------|----------|----------|
| ISSUE      | DESCRIPTION                 | APPROVED | DATE     |
| A          | FOR DEVELOPMENT APPLICATION | RP       | 15/11/19 |
| B          | FOR DEVELOPMENT APPLICATION | RP       | 07/01/21 |

LOT 246  
DP 717422  
**DARUK PARK**

THIS DRAWING ISSUE HAS BEEN REVIEWED FOR  
**DEVELOPMENT APPLICATION**

APPROVED BY: GA  
CHECKED BY: RP  
CLIENT: SUMMIT CARE

DRAWING: SITE PLAN

SHEET CREATED: 06/02/16  
SCALE @ A1: 1 : 400  
DRAWN: JC

PROJECT No.: 2016098 A  
DISCP.: DA-030  
ISSUE: B

PROJECT: CASULA AGED CARE

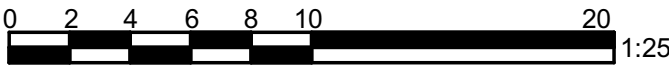
Lot 1, Pier 8-9, 23 Hickson Road  
Walsh Bay New South Wales 2000 Australia  
T 61 2 9290 2722 F 61 2 9290 1150  
E sydney@jacksonteece.com  
Jackson Teece Chesterman Willis Pty Ltd  
Trading as Jackson Teece  
ABN 15 083 807 290  
Nominated Architects: Damian Barker (8192), John Gow (6790), Daniel Hudson (8315)

**JACKSON TEECE**



AMENDMENTS

| ISSUE | DESCRIPTION                 | APPROVED | DATE     |
|-------|-----------------------------|----------|----------|
| A     | FOR DEVELOPMENT APPLICATION | RP       | 15/11/19 |
| B     | FOR DEVELOPMENT APPLICATION | RP       | 07/01/21 |



THIS DRAWING ISSUE HAS BEEN REVIEWED FOR  
**DEVELOPMENT APPLICATION**

APPROVED BY: GA CHECKED BY: RP

CLIENT  
SUMMIT CARE

DRAWING  
FLOOR PLAN - BASEMENT 1

SHEET CREATED 06/02/16 SCALE @ A1 1 : 250 DRAWN RP/PK

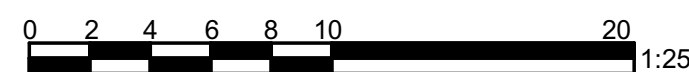
PROJECT No. 2016098 A DISCP. DA-109 ISSUE B

PROJECT  
CASULA AGED CARE

Lot 1, Pier 8-9, 23 Hickson Road  
Walsh Bay New South Wales 2000 Australia  
T 61 2 9290 2722 F 61 2 9290 1150  
E sydney@jacksonteece.com  
Jackson Teece Chesterman Willis Pty Ltd  
Trading as Jackson Teece  
ABN 15 083 837 290  
Nominated Architects: Damian Barker (8192), John Gow (6790), Daniel Hudson (8315)

**JACKSON TEECE**





THIS DRAWING ISSUE HAS BEEN REVIEWED FOR

## DEVELOPMENT APPLICATION

APPROVED BY: GA CHECKED BY: RP

CLIENT  
SUMMIT CARE

DRAWING  
FLOOR PLAN - GROUND  
FLOOR

|               |            |          |
|---------------|------------|----------|
| SHEET CREATED | SCALE @ A1 | DRAWN BY |
| 06/02/16      | 1 : 250    | RP/PL    |

|             |       |             |       |
|-------------|-------|-------------|-------|
| PROJECT No. | DISC. | DRAWING No. | ISSUE |
| 2016098     | A     | DA-110      | B     |

PROJECT  
CASULA AGED CARE

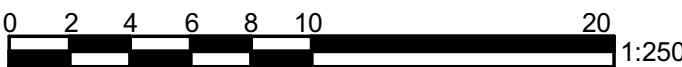
Lot 1, Pier 8-9, 23 Hickson Road  
Walsh Bay New South Wales 2000 Australia  
T 61 2 9290 2722 F 61 2 9290 1150  
E [sydney@jacksonteecoe.com](mailto:sydney@jacksonteecoe.com)  
Jackson Teece Chesterman Willis Pty Ltd  
Trading as Jackson Teece  
ABN 11 083 837 290  
Nominated Architects: Damian Barker (8192), John Gou (6790), Daniel Hudson (8315)

**JACKSON TEECE**



AMENDMENTS

| ISSUE | DESCRIPTION                 | APPROVED | DATE     |
|-------|-----------------------------|----------|----------|
| A     | FOR DEVELOPMENT APPLICATION | RP       | 15/11/19 |
| B     | FOR DEVELOPMENT APPLICATION | RP       | 07/01/21 |



THIS DRAWING ISSUE HAS BEEN REVIEWED FOR  
**DEVELOPMENT APPLICATION**

APPROVED BY: GA CHECKED BY: RP

CLIENT  
SUMMIT CARE



DRAWING  
FLOOR PLAN - LEVEL 1

SHEET CREATED 06/02/16 SCALE @ A1 1 : 250 DRAWN RP/PP

PROJECT No. 2016098 A DISCP. DA-111 ISSUE B

PROJECT  
CASULA AGED CARE

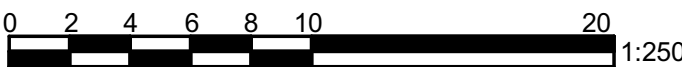
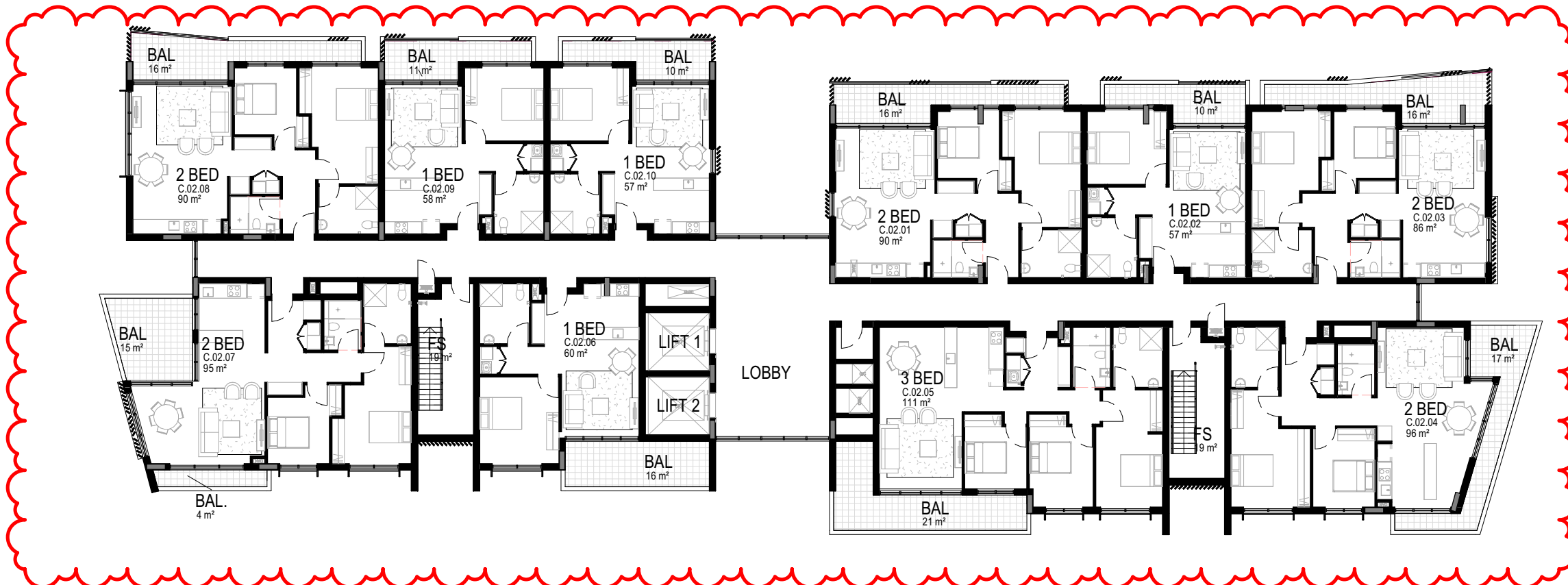
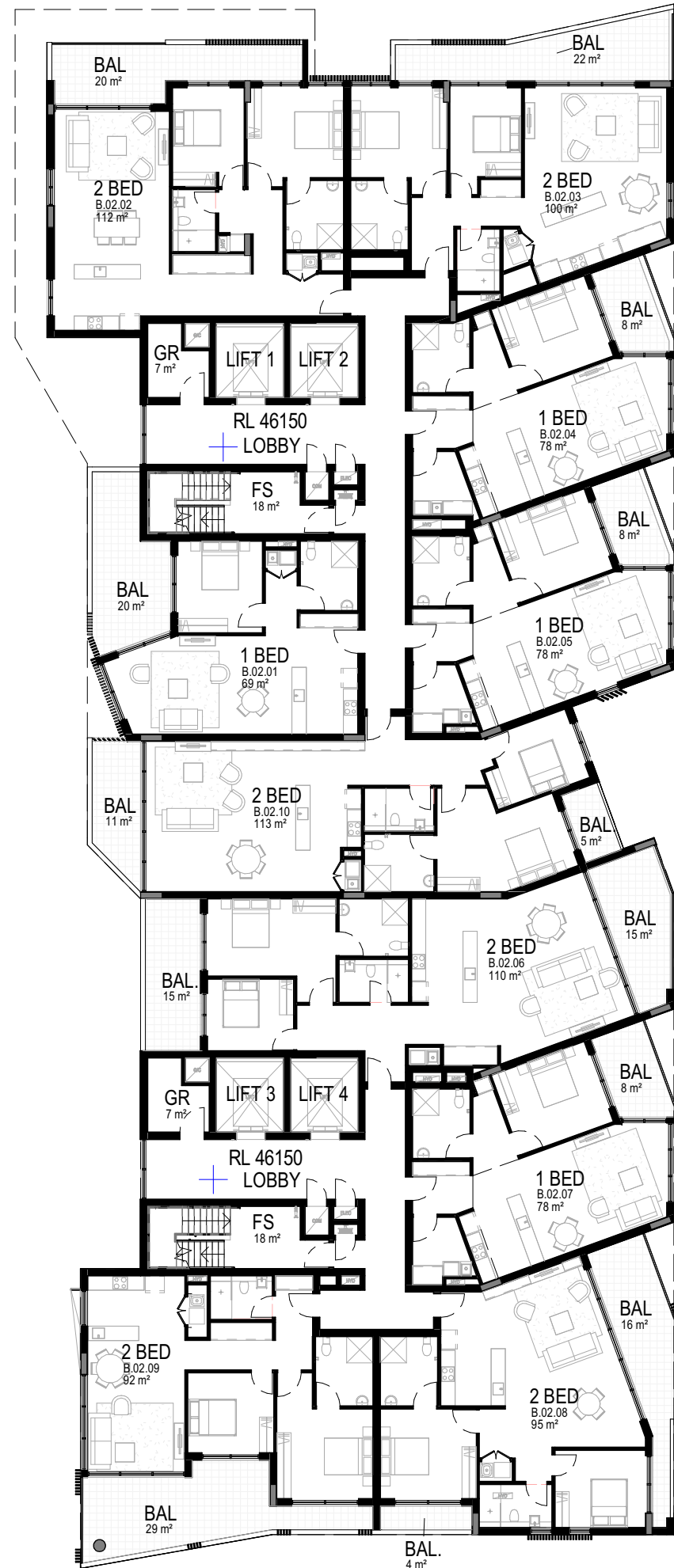
Lot 1, Pier 8-9, 23 Hickson Road  
Walsh Bay New South Wales 2000 Australia  
T 61 2 9290 2722 F 61 2 9290 1150  
E sydney@jacksonteece.com  
Jackson Teece Chesterman Willis Pty Ltd  
Trading as Jackson Teece  
ABN 15 083 807 290  
Nominated Architects: Damian Barker (8192), John Gow (6790), Daniel Hudson (8315)

**JACKSON TEECE**



AMENDMENTS

| ISSUE | DESCRIPTION                 | APPROVED | DATE     |
|-------|-----------------------------|----------|----------|
| A     | FOR DEVELOPMENT APPLICATION | RP       | 15/11/19 |
| B     | FOR DEVELOPMENT APPLICATION | RP       | 07/01/21 |



THIS DRAWING ISSUE HAS BEEN REVIEWED FOR  
**DEVELOPMENT APPLICATION**

APPROVED BY: GA CHECKED BY: RP

CLIENT  
SUMMIT CARE



DRAWING  
FLOOR PLAN - LEVEL 2

SHEET CREATED 06/02/16 SCALE @ A1 1 : 250 DRAWN RP/PK

PROJECT No. 2016098 A DISCP. DA-112 ISSUE B

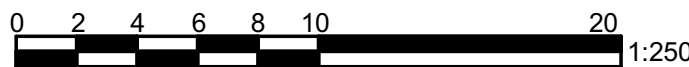
PROJECT  
CASULA AGED CARE

Lot 1, Pier 8-9, 23 Hickson Road  
Walsh Bay New South Wales 2000 Australia  
T 61 2 9290 2722 F 61 2 9290 1150  
E sydney@jacksonteece.com  
Jackson Teece Chesterman Willis Pty Ltd  
Trading as Jackson Teece  
ABN 15 083 837 290  
Nominated Architects: Damian Barker (8192), John Gow (6790), Daniel Hudson (8315)

**JACKSON TEECE**



## AMENDMENTS



THIS DRAWING ISSUE HAS BEEN REVIEWED FOR

## DEVELOPMENT APPLICATION

APPROVED BY: GA CHECKED BY: RP

CLIENT  
SUMMIT CARE



DRAWING  
FLOOR PLAN - LEVEL 3

|               |            |          |
|---------------|------------|----------|
| SHEET CREATED | SCALE @ A1 | DRAWN BY |
| 06/02/16      | 1 : 250    | RP/PI    |

|             |       |             |       |
|-------------|-------|-------------|-------|
| PROJECT No. | DISC. | DRAWING No. | ISSUE |
| 2016098     | A     | DA-113      | B     |

PROJECT  
CASULA AGED CARE

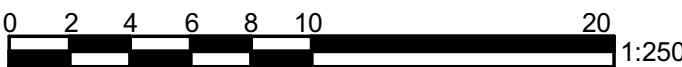
Lot 1, Pier 8-9, 23 Hickson Road  
Walsh Bay New South Wales 2000 Australia  
T 61 2 9290 2722 F 61 2 9290 1150  
E [sydney@jacksonteece.com](mailto:sydney@jacksonteece.com)  
Jackson Teece Chesterman Willis Pty Ltd  
Trading as Jackson Teece  
ABN 15 083 37 290  
Nominated Architects: Damian Barker (8192), John Gow (6790), Daniel Hudson (8315)

# JACKSON TEECE



AMENDMENTS

| ISSUE | DESCRIPTION                 | APPROVED | DATE     |
|-------|-----------------------------|----------|----------|
| A     | FOR DEVELOPMENT APPLICATION | RP       | 15/11/19 |
| B     | FOR DEVELOPMENT APPLICATION | RP       | 07/01/21 |



THIS DRAWING ISSUE HAS BEEN REVIEWED FOR

DEVELOPMENT APPLICATION

APPROVED BY: GA CHECKED BY: RP

CLIENT  
SUMMIT CARE



DRAWING  
FLOOR PLAN - LEVEL 4

SHEET CREATED 06/02/16 SCALE @ A1 1 : 250 DRAWN RP/PK

PROJECT No. 2016098 A DISCP. DA-114 ISSUE B

PROJECT  
CASULA AGED CARE

Lot 1, Pier 8-9, 23 Hickson Road  
Walsh Bay New South Wales 2000 Australia  
T 61 2 9290 2722 F 61 2 9290 1150  
E sydney@jacksonteece.com  
Jackson Teece Chesterman Willis Pty Ltd  
Trading as Jackson Teece  
AJIA 15 083 837 290  
Nominated Architects: Damian Barker (8192), John Gow (6790), Daniel Hudson (8315)

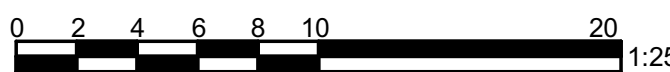
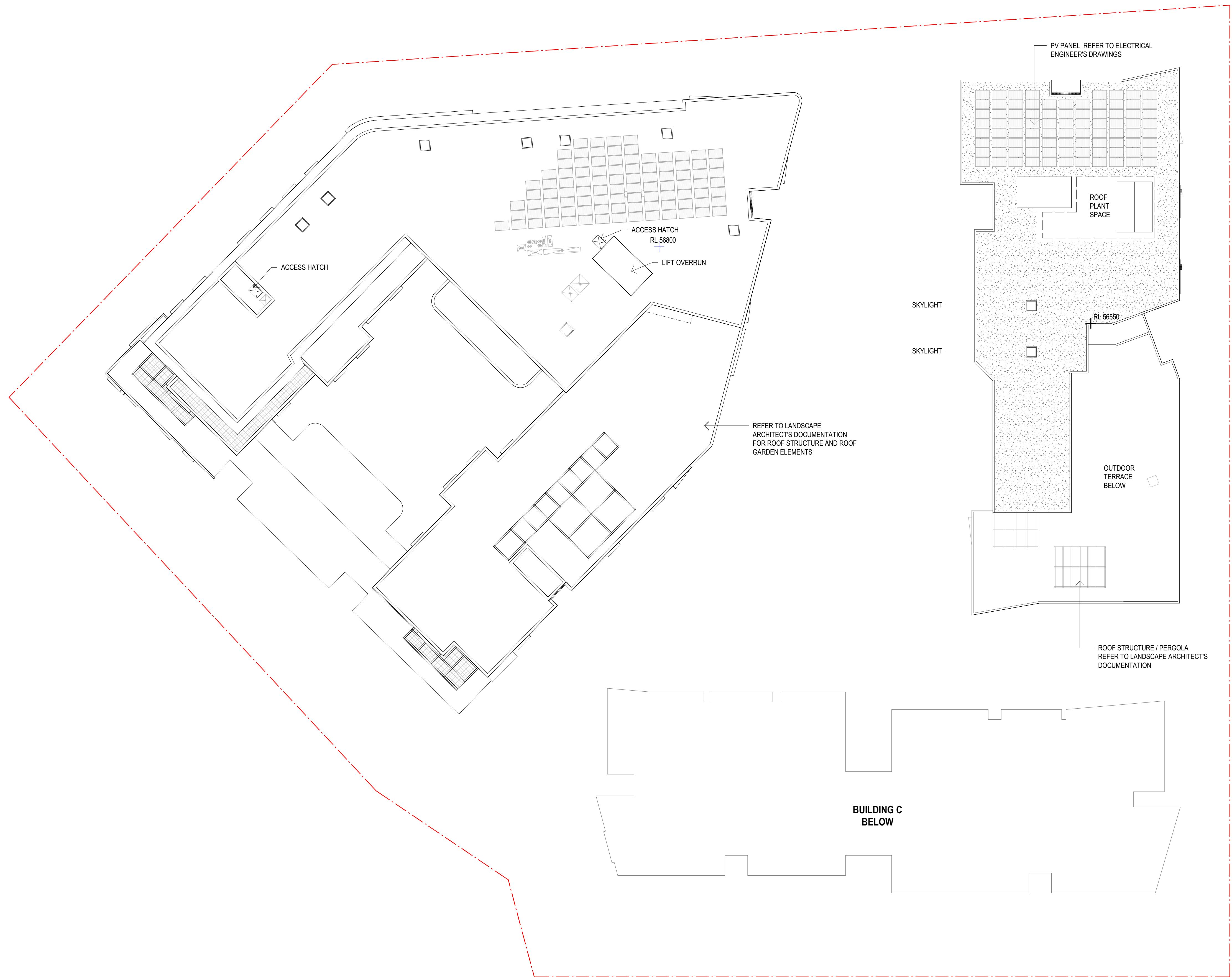
JACKSON TEECE



CONCEPTS AND INFORMATION CONTAINED IN THIS DRAWING ARE COPYRIGHT AND  
MAY NOT BE REPRODUCED IN WHOLE OR PART OR BY ANY MEDIUM, WITHOUT THE  
WRITTEN PERMISSION OF JACKSON TEECE. DO NOT SCALE THIS DRAWING, USE  
FIGURED DIMENSIONS ONLY. VERIFY ALL PROJECT DIMENSIONS BEFORE  
COMMENCING ON-SITE WORK OR OFF-SITE FABRICATION. NOTIFY JACKSON TEECE  
OF ANY DISCREPANCIES AND SEEK INSTRUCTIONS.

## AMENDMENTS

| ISSUE | DESCRIPTION                 | APPROVED | DATE     |
|-------|-----------------------------|----------|----------|
| A     | FOR DEVELOPMENT APPLICATION | RP       | 15/11/19 |
| B     | FOR DEVELOPMENT APPLICATION | RP       | 07/01/21 |



THIS DRAWING ISSUE HAS BEEN REVIEWED FOR

## DEVELOPMENT APPLICATION

APPROVED BY: GA CHECKED BY: RP

CLIENT  
SUMMIT CARE



**DRAWING**  
FLOOR PLAN - LEVEL 5

|               |            |          |
|---------------|------------|----------|
| SHEET CREATED | SCALE @ A1 | DRAWN BY |
| 06/02/16      | 1 : 250    | RP/K     |

|             |       |             |     |
|-------------|-------|-------------|-----|
| PROJECT No. | DISC. | DRAWING No. | ISS |
| 2016098 A   |       | DA-115      | B   |

PROJECT  
CASULA AGED CARE

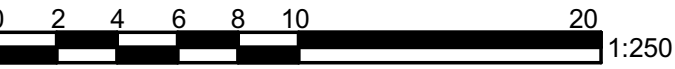
Lot 1, Pier 8-9, 23 Hickson Road  
Walsh Bay New South Wales 2000 Australia  
T 61 2 9290 2722 F 61 2 9290 1150  
E [sydney@jacksonteece.com](mailto:sydney@jacksonteece.com)  
Jackson Teece Chesterman Willis Pty Ltd  
Trading as Jackson Teece  
ABN 15 0883 837 290  
Nominated Architects: Damian Barker (8192), John Gow (6790), Daniel Hudson (8315)

# JACKSON TEECE



AMENDMENTS

| ISSUE | DESCRIPTION                 | APPROVED | DATE     |
|-------|-----------------------------|----------|----------|
| A     | FOR DEVELOPMENT APPLICATION | RP       | 15/11/19 |
| B     | FOR DEVELOPMENT APPLICATION | RP       | 07/01/21 |



THIS DRAWING ISSUE HAS BEEN REVIEWED FOR  
**DEVELOPMENT APPLICATION**

APPROVED BY: GA CHECKED BY: RP

CLIENT  
SUMMIT CARE



DRAWING  
FLOOR PLAN - ROOF PLAN

SHEET CREATED 06/02/16 SCALE @ A1 1 : 250 DRAWN RP/PK

PROJECT No. 2016098 A DISCP. DA-116 DRAWING No. ISSUE B

PROJECT  
CASULA AGED CARE

Lot 1, Pier 8-9, 23 Hickson Road  
Walsh Bay New South Wales 2000 Australia  
T 61 2 9290 2722 F 61 2 9290 1150  
E sydney@jacksonteece.com  
Jackson Teece Chesterman Willis Pty Ltd  
Trading as Jackson Teece  
ABN 15 683 837 290  
Nominated Architects: Damian Barker (8192), John Gow (6790), Daniel Hudson (8315)

**JACKSON TEECE**